

Bremer Bank

38 acres, 85th Ave N & Revere Ln N, Maple Grove, MN

Former gravel pit in the heart of Maple Grove's mining district.

ACTIONS TAKEN

- Planted a crop of winter wheat in October to establish agricultural status by January 2.
- Worked with the City Assessor, including a site visit to validate the crop.
- Submitted comps to lower the assessed value.
- Negotiated a crop lease.
- Cleared, fertilized, and prepared land for planting.

PREVIOUS TAX	\$108,124.55
NEW TAX (EST.)	\$36,697.49
TOTAL ANNUAL SAVINGS	\$71,427.06



Children's Hospital

18.56 acres, Shoreview, MN

ACTIONS TAKEN

- Met with the County Assessor to share comps and discuss the proposed agricultural designation.
- Coordinated a winter wheat crop with a farmer (negotiated farm lease).
- Planted winter wheat in October and established a crop.
- Validated agricultural status in spring and confirmed there was not winter-kill of the crop.
- Submitting ongoing crop receipts.

PREVIOUS TAX	\$191,268.00
NEW TAX (EST.)	\$45,000.00
TOTAL ANNUAL SAVINGS	\$146,268.00



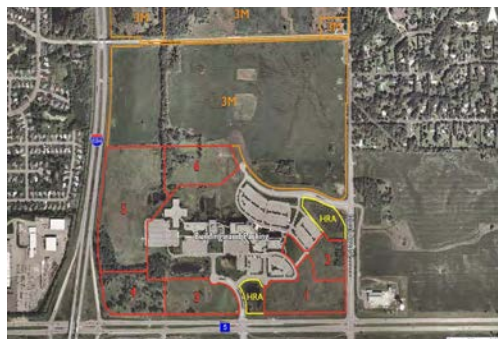
Frattalone Land

43 Acres, Columbus, MN

ACTIONS TAKEN

- Worked with the Assessor to lower the assessed value and mil rate by achieving agricultural designation and planting a crop.
- Provided updated/current comps to the Assessor.
- Cleared land and established a cash crop, meeting criteria for agricultural designation of at least 10 tillable acres and that the crop is available for sale to a third party.

PREVIOUS TAX	\$42,270.00
NEW TAX (EST.)	\$18,125.00
TOTAL ANNUAL SAVINGS	\$24,145.00



Imation Campus

Oakdale, MN

ACTIONS TAKEN

- Worked with the Assessor to lower the mil rate by achieving agricultural designation and planting a crop.
- Provided updated lease and crop yields to the Assessor.
- Cleared land and established a cash crop, meeting criteria for agricultural designation of at least 10 tillable acres and that the crop is available for sale to a third party.

PREVIOUS TAX	\$458,837.00
NEW TAX (EST.)	\$128,526.00
TOTAL ANNUAL SAVINGS	\$330,311.00